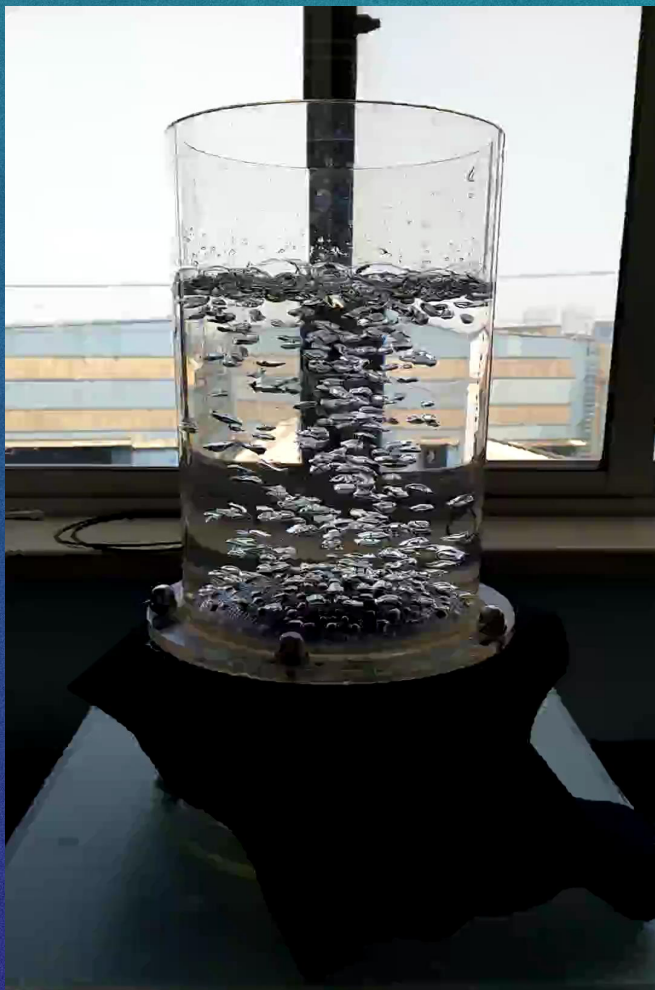


A dynamic splash of water in shades of blue and white, with numerous small droplets and bubbles trailing behind the main wave, set against a gradient blue background.

# 微多孔膜

PU MICROPOROUS MEMBRANE

## 微多孔膜的特性 Feature of Microporous Membrane



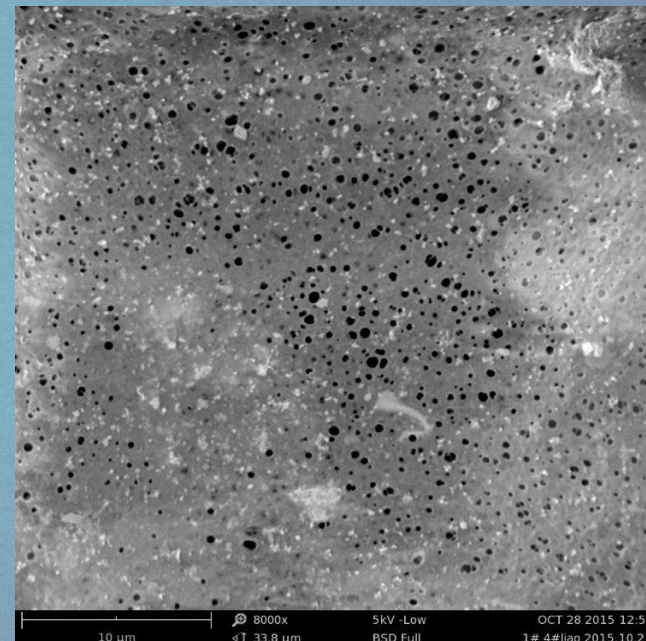
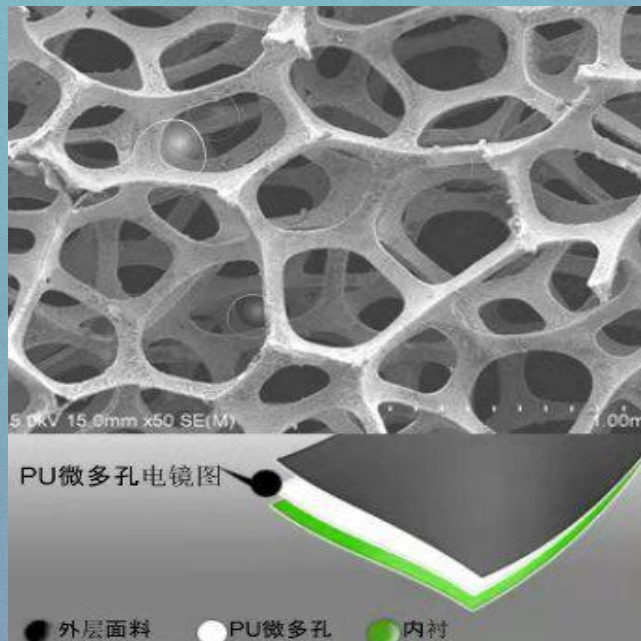
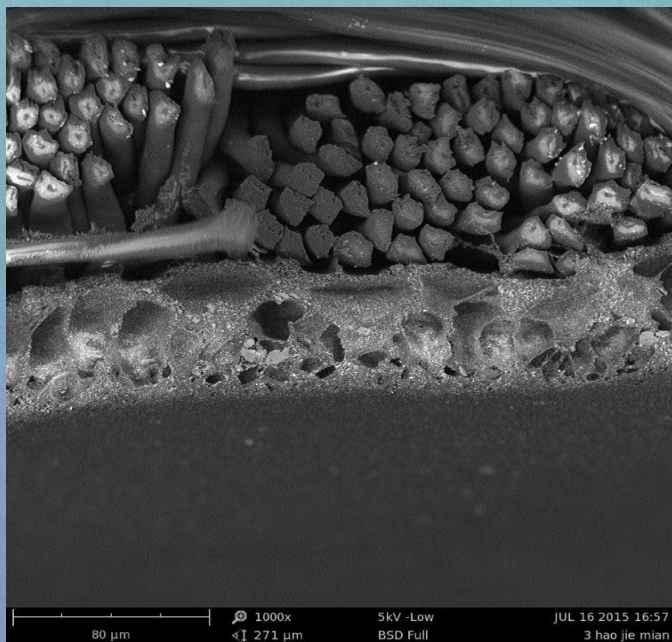
**微孔结构，透湿性好，  
穿着舒适**

Micropore structure  
Wear comfortable

**疏水性，无膨润**

Hydrophobicity  
None swelling

# 九裕微多孔膜的优势 Our Advantages



## 薄膜参数

- 克重weight:  $18\text{g/m}^2 \pm 1\text{g}$
- 厚度thickness:  $0.05\text{mm}$
- 水压W/P:  $>5000\text{mmH}_2\text{O}$  JIS L 1092 B
- 透湿MVP:  $>9000\text{g/m}^2$  24hrs JIS L 1099 A1
- 透气A/P:  $>0.1\text{cfm}$  ASTM D737
- 可指定颜色  
Can be in different color

# 微多孔膜的应用 Application



用途广泛，可以用来做面，做2L, 2.5L, 3L 贴合  
Used for lamination as face, 2L, 2.5L, 3L



户外运动夹克  
Outdoor jacket



防水鞋，防水手套  
Outdoor shoes、  
gloves



工业用过滤器材  
Filtration  
equipment

A dynamic splash of water with bubbles against a blue gradient background. The water is captured in mid-air, creating a sense of movement and energy. The bubbles are of various sizes and are scattered throughout the splash, adding to the visual complexity. The background is a smooth gradient of blue, transitioning from a lighter shade at the top to a darker shade at the bottom.

THANK YOU