



TRIM TREND SPOTTED:  
 the new era of **BONDING** for aesthetics in sportswear coming for the youth  
 audience built upon their strong high street fashion need!

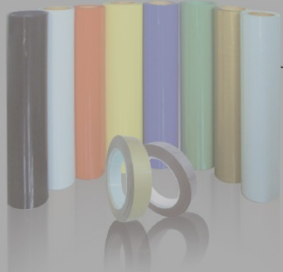
*Decorative Overlay Film / Tape*

*Seamless Film / Tape*

*Once you try it, you'll NEVER go back!*



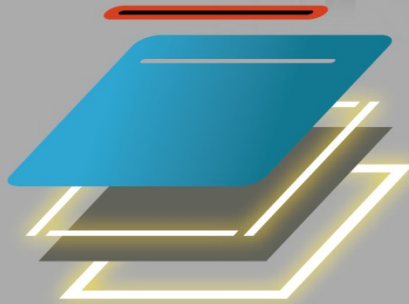
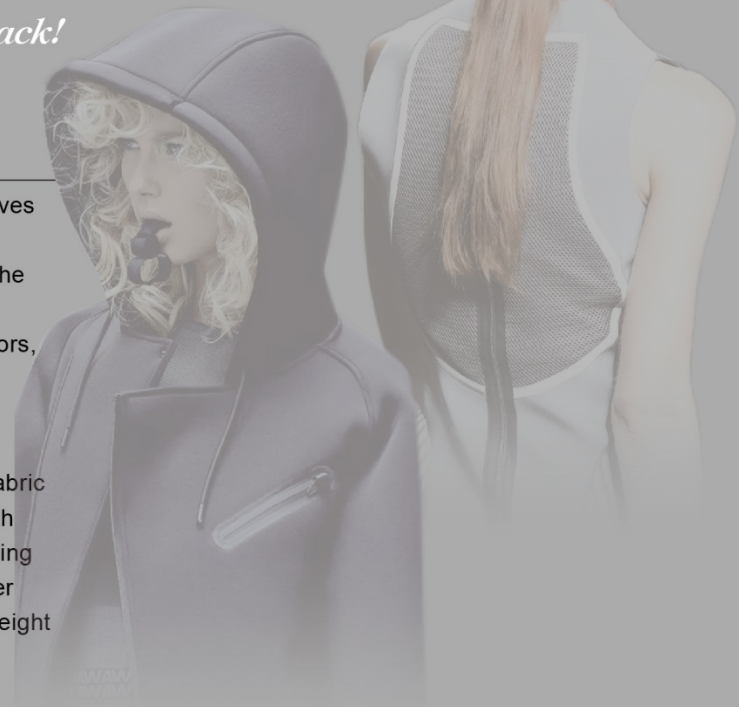
*Once you try it, you'll NEVER go back!*



## Decorative Overlay Film/ Tape

This new line named “Decorative Overlay Film / Tape” which involves two main benefits that are generally associated with sportswear’ fashion and function appealing. To maintain a leading position in the industry, we offer more aside from providing much color choices ( Color Reflective X 40 / Mat X 60 ) compared with other competitors, this series of product also allows designers to customize tape’s surface textures or pattern based on their creation.

Besides, we focus creativities on exclusive solutions to different fabric application. “Decorative Overlay Film / Tape” can be combined with E.Textint suggested quality to prevent color-migration / color-staining even on Sublimation (Paper-Print) fabrics with migration rate under 3.0 in S.A.M quality or to ensure the wash durability with lighter weight up to 50% in WP quality.



## Seamless Film/ Tape

Based on the trend of aesthetics in high performance outerwear, traditionally bulky stitched seams have been replaced with adhesive film / tape for better apparel construction and design without sewn seams.

With strong chemical background and 30-year-old sophisticated heat transfer technology experience, E. Textint represents the latest development, “Seamless Film / Tape” with excellent bond strength not only for more exquisite finish-look but also for production optimisation.

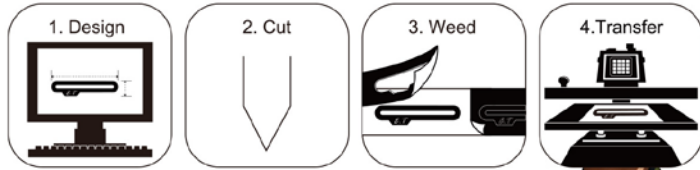
Also, it features outstanding wash ability and water resistance. There are so many benefits while using Seamless Film / Tape that cut-and-sew techniques have yet to achieve in the bonding process.

# Decorative Overlay Film / Tape

Decorative Overlay Film can be easily cut to fit your design and give you the most convenience of production. More importantly, the range of usage is very broad, which can be incorporated into any apparel design.

Decorative Overlay Tape can be used for decorative purposes or to enhance the function of an outdoor seam, such as water repellent properties and good resistance to abrasion. That is, our tape can help taking your awesome products to even more fabulous level!

## Work Flow



## Specification

- Standard Film Width: 28/ 38cm
- Reflective Film Width: 28cm

## MCQ

- Film: Bulk 100 YDS / SS: 10 YDS
- Tape: Bulk 2000 YDS / SS: 200YDS

## Color Selection

- Standard: 60 colors
- Reflective: 40 colors

## Exclusive Solutions

- **SAM (Super Anti-Migration):**
  - No color migration
  - No color stain after washing
  - Soft hand feel
  - For fabric migration rate 3.0 or under
- **WP (for Water-Repellent fabrics):**
  - Excellent washing fastness on *DWR* fabrics
  - Lighter weight
  - Hand-feel is smooth and flat

## Quality Options

Product Types	Quality			
	ST (Standard)	SAM+WP	SAM	WP
Mat Film/Tape	V	V	V	V
Silver Reflective Film/Tape	V			V
Color Reflective Film/Tape	V	V	V	V

# Seamless Film / Tape

Seamless Film/ Tape are pre-applied with exclusive adhesive which can be tightly adhere to different fabrics or materials from intimate apparel to high performance outerwear as the function of bonding.

To give both manufacturers and designers the flexibility, E.Textint provides this series of product in wide widths or in tape form with exclusive adhesives according to your bonded application or designs.

In addition to its strong and durable function of bonding to various fabrics, such as knitted, woven, heat-sensitive, stretch or DWR fabric, it also features excellent wash ability, good adhesion, and high peel strength before /after wash!

## Exclusive Solutions

- **SW (for Water-Repellent fabrics):**
  - Excellent washing fastness on *DWR* fabrics
  - Lighter weight
  - Hand-feel is smooth and flat
- **SH (for Heat-Sensitive Materials)**
  - Good bonding for heat-sensitive fabrics like polypropylene (PP), polyester, etc.
  - Heat press operation temp. at 100°C to avoid fabric color change and press mark
- **SS (for Heat-Sensitive/ Stretch Materials)**
  - Suitable for bonding of heat-sensitive and stretch fabrics like polypropylene (PP), polyester, lycra, nylon, etc.
  - Outstanding stretch and recovery



## Specification

- **Film Width: 28/ 38cm**  
(SS Quality Film width:28 cm)

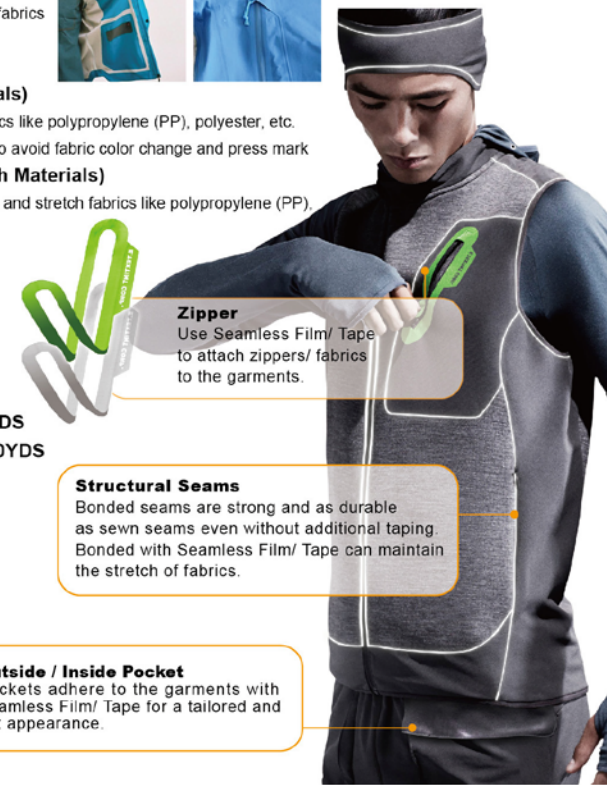
## MOQ

- **Film: Bulk 100 YDS / SS: 10 YDS**
- **Tape: Bulk 2000 YDS / SS: 200YDS**



## Quality Options

Product Types	Quality			
	SG For General Fabrics	SW For Water-Repellent Fabrics	SH For Heat Sensitive Fabrics	SS For Heat Sensitive and Stretching Fabrics
Seamless Film/Tape	V	V	V	V





## Color Palette (Mat Surface)

Pantone color for reference only.

\*\* Electronic swatches displayed here are for preliminary color reference only. The color represented on your monitor or printer may not show the color correctly. Contact E. Textint to receive the color guide with actual film swatches. \*\*



Silver Reflective Coefficient: 400°CPL

ET.801R  
Black

ET.G03R  
Metallic 873C

ET.902R  
Pantone 1395C

ET.903R  
Pantone 7592C

ET.301R  
Pantone 803C

ET.402R  
Pantone 802C

ET.701R  
Cool Gray 11C

ET.702R  
Cool Gray 9C

ET.303R  
Pantone 101U

ET.306R  
Pantone 1235C

ET.201R  
Pantone 1495C

ET.403R  
Pantone 2297C

ET.405R  
Pantone 7482C

ET.703R  
Warm Gray 10C

ET.202R  
Pantone 165C

ET.101R  
Pantone 202C

ET.103R  
Pantone 185C

ET.104R  
Pantone 805C

ET.407R  
Pantone 3308C

ET.705R  
Cool Gray 6C

ET.001R  
White

ET.105R  
Pantone 213C

ET.108R  
Pantone 2047C

ET.602R  
Pantone 7677C

ET.408R  
Fluorescent Green

ET.109R  
Fluorescent Red

ET.S01R  
Metallic 877C

ET.604R  
Pantone 7656C

ET.606R  
Pantone 275C

ET.501R  
Pantone 801C

ET.503R  
Pantone 2935C

ET.204R  
Fluorescent Orange

ET.G01R  
Metallic 10122C

ET.G02R  
Metallic 10133C

ET.505R  
Pantone 282C

ET.506R  
Pantone 2152C

ET.507R  
Pantone 2223C

ET.307R  
Fluorescent Yellow

ET.508R  
Pantone 2185C

ET.401R  
Pantone 3272C

# Color Palette (Reflective Surface)

Pantone color for reference only

\*\* Electronic swatches displayed here are for preliminary color reference only. The color represented on your monitor or printer may not show the color correctly. Contact E. Textint to receive the color guide with actual film swatches. \*\*