

CORDURA[®]
Advanced Fabrics

**FIND
YOUR
FEET**

**HARDWEARING AND VERSATILE
FABRICS FOR FOOTWEAR**

CORDURA. LIVE DURABLE.[™]



CORDURA®
Advanced Fabrics

ISPO AWARD FABRICS

Your product deserves an award.
Don't miss out the ISPO award fabrics.





CFDKS008



Category: CORDURA® AFT Fabric

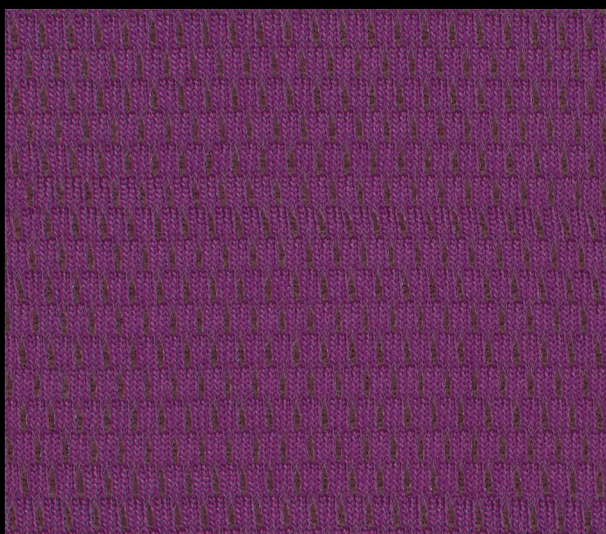
Composition: 100% Recycled Polyester

Width: 54" (±1")

Weight: 208 g/m² (±5%)



COR1016



Category: CORDURA® AFT Fabric

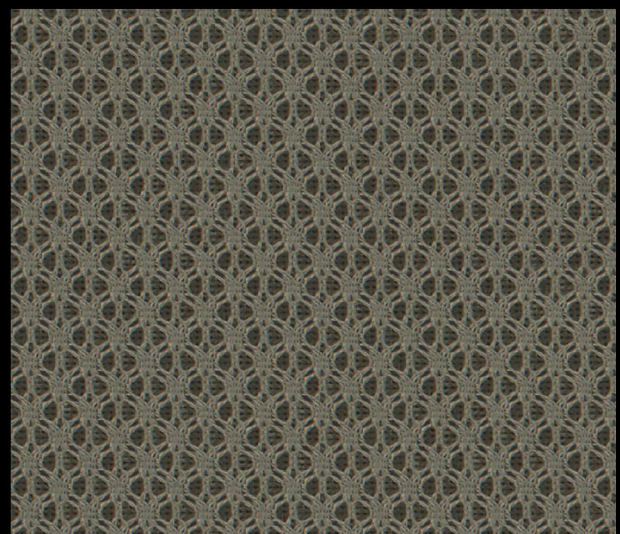
Composition: 53% Nylon + 47% Polyester

Width: 58" (±1")

Weight: 471 g/m² (±5%)



CF2GS003



Category: CORDURA® AFT Fabric

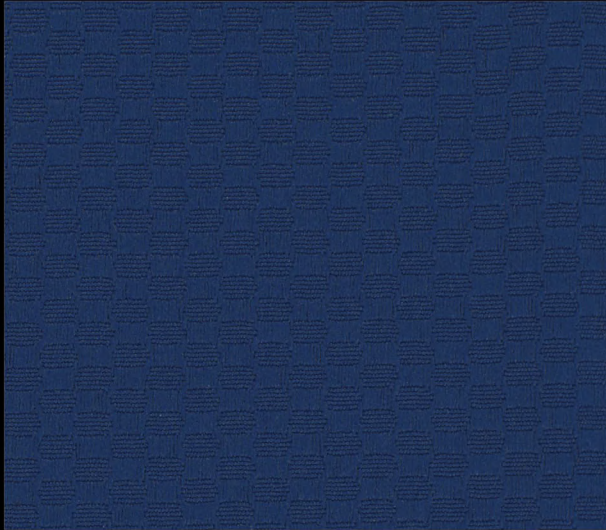
Composition: 92% Polyester +
8% CD Polyester

Width: 56" (±1")

Weight: 385 g/m² (±5%)



CFJIS019



Category: CORDURA® *re/cor™*

Composition: 100% Recycled Polyester

Width: 58" (±1")

Weight: 252 g/m² (±5%)



CFJIS021



Category: CORDURA® *re/cor™*

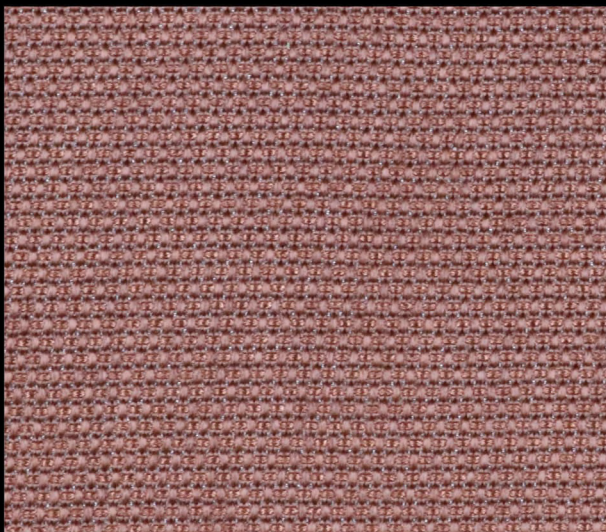
Composition: 100% Recycled Polyester

Width: 58" (±1")

Weight: 266 g/m² (±5%)



CFJHS001



Category: CORDURA® *HP Fabric*

Composition: 100% Polyester

Width: 58" (±1")

Weight: 305 g/m² (±5%)



CFJHS005



Category: CORDURA® *HP Fabric*

Composition: 100% Polyester

Width: 58" (±1")

Weight: 288 g/m² (±5%)



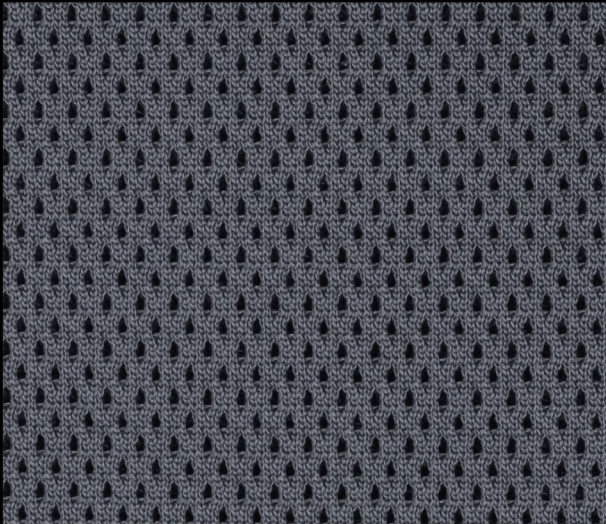
Best Sellers

TLC features bestsellers of **CORDURA® AFT Fabric**, **CORDURA® re/cor™** and **CORDURA® HP Fabric**.
If you are not sure which to choose,
start by using our bestsellers for your products.



CORDURA®
Advanced Fabrics

COR1002



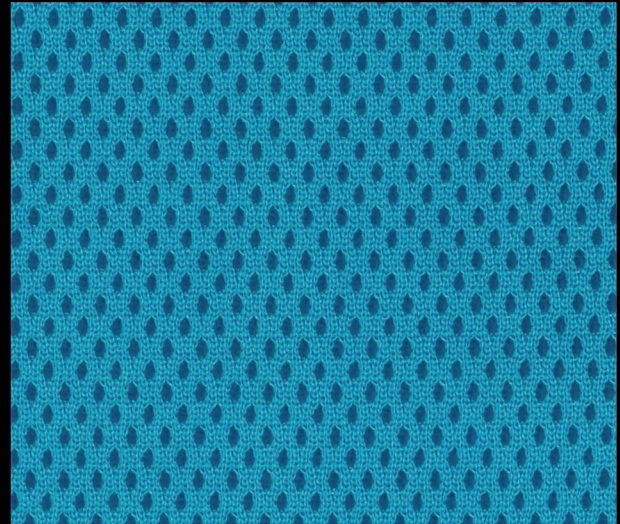
Category: CORDURA® AFT Fabric

Composition: 100% Polyester

Width: 42" (±1")

Weight: 468 g/m² (±5%)

COR1003



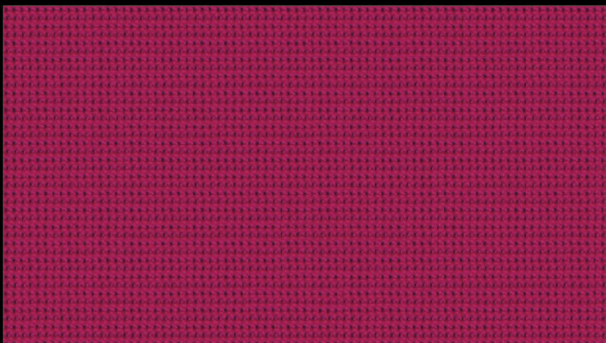
Category: CORDURA® AFT Fabric

Composition: 100% Polyester

Width: 42" (±1")

Weight: 375 g/m² (±5%)

COR2008



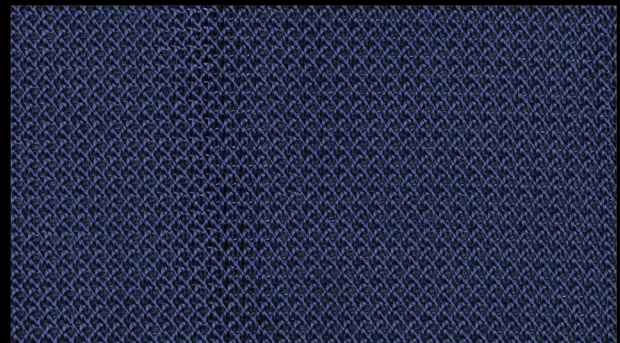
Category: CORDURA® AFT Fabric

Composition: 100% Nylon

Width: 44" (±1")

Weight: 277 g/m² (±5%)

COR2020



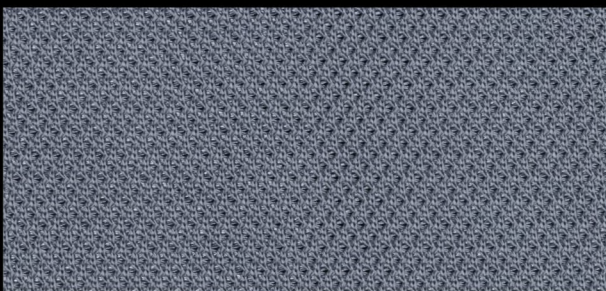
Category: CORDURA® AFT Fabric

Composition: 100% Polyester

Width: 56" (±1")

Weight: 215 g/m² (±5%)

CFDHS001



Category: CORDURA® AFT Fabric

Composition: 100% Polyester

Width: 58" (±1")

Weight: 290 g/m² (±5%)

CF8JS001



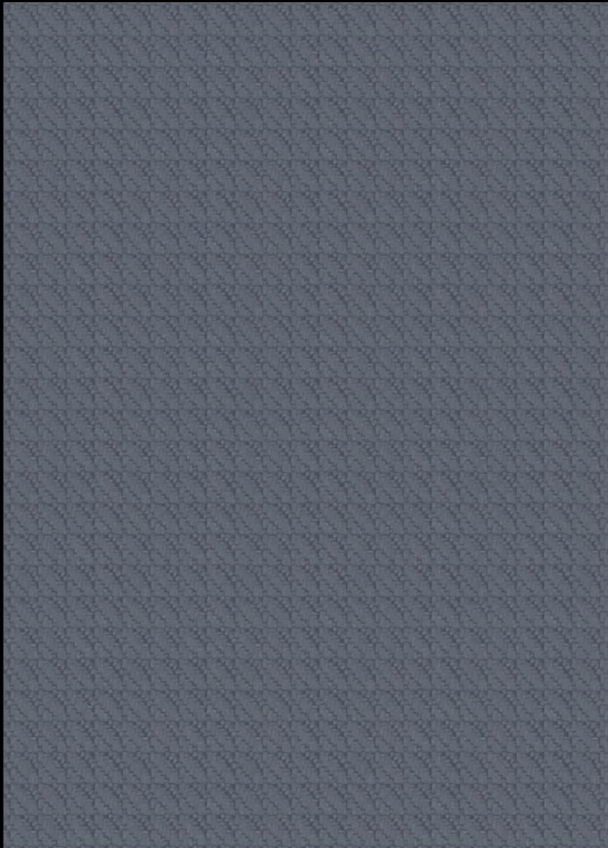
Category: CORDURA® AFT Fabric

Composition: 100% Polyester

Width: 50" (±1")

Weight: 277 g/m² (±5%)

CFJIS025



Category: CORDURA® *re/cor™*
Composition: 100% Recycled Polyester
Width: 58" (±1")
Weight: 275 g/m² (±5%)

CFJIS002



Category: CORDURA® *re/cor™*
Composition: 100% Recycled Polyester
Width: 58" (±1")
Weight: 267 g/m² (±5%)

CFJIS014



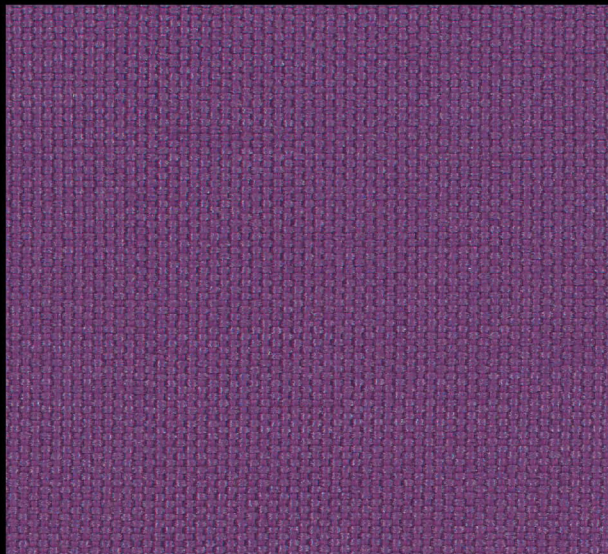
Category: CORDURA® *re/cor™*
Composition: 100% Recycled Polyester
Width: 58" (±1")
Weight: 330 g/m² (±5%)

COR4005

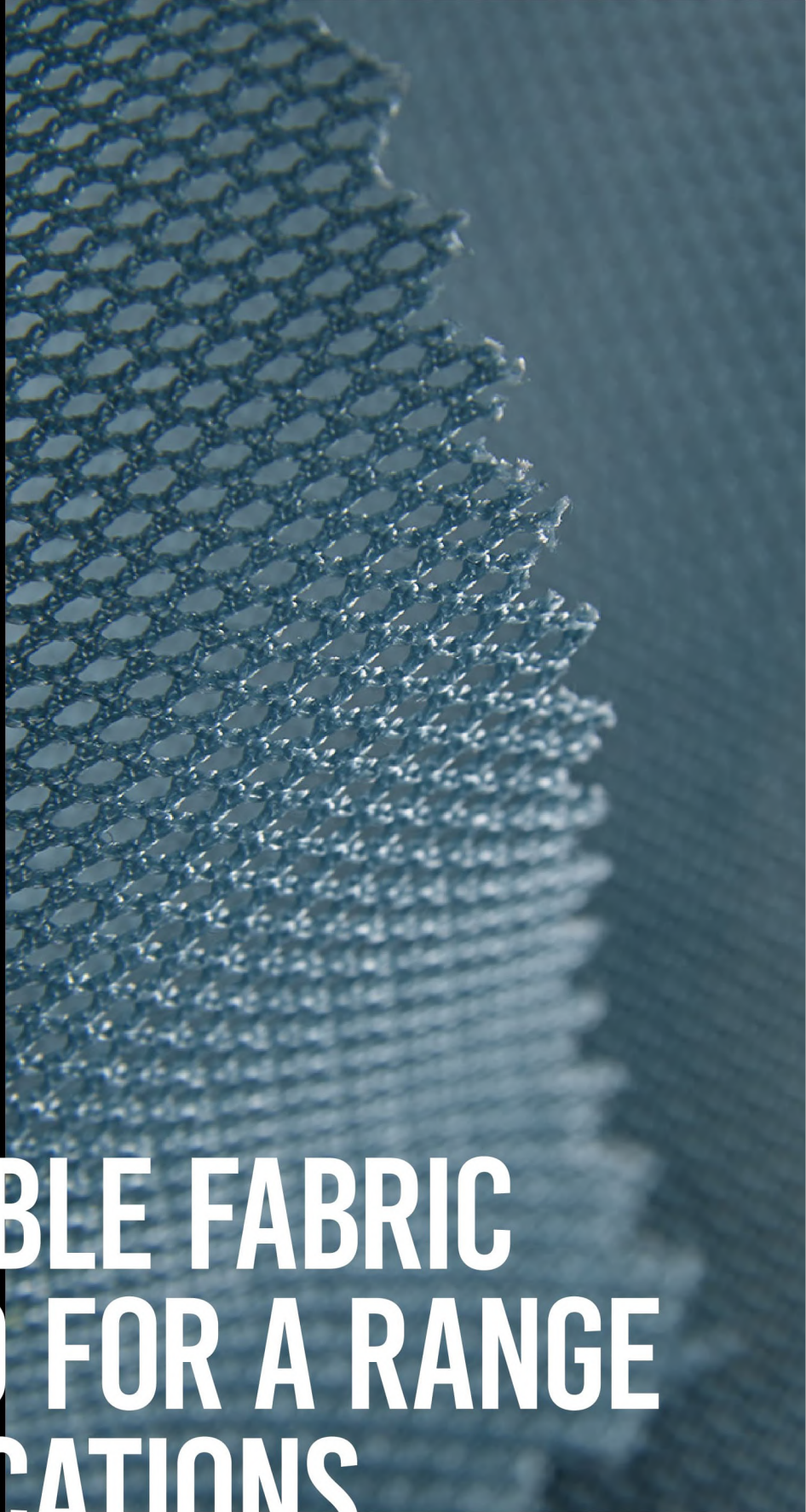


Category: CORDURA® *HP Fabric*
Composition: 100% Polyester
Width: 58" (±1")
Weight: 251 g/m² (±5%)

COR4006



Category: CORDURA® *HP Fabric*
Composition: 100% Polyester
Width: 58" (±1")
Weight: 323 g/m² (±5%)

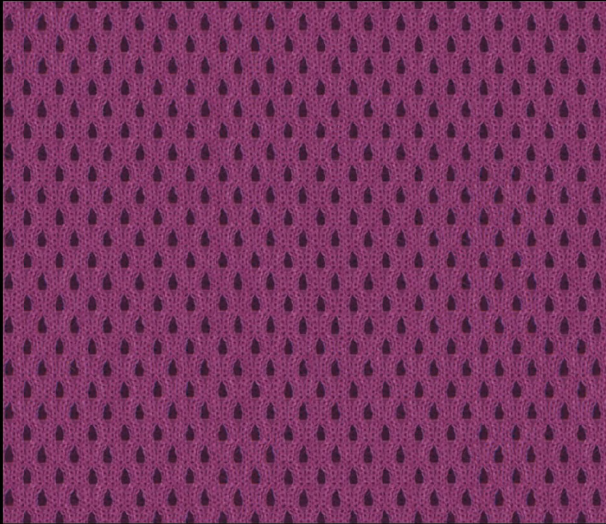


CORDURA®
AFT Fabric

**BREATHABLE FABRIC
DESIGNED FOR A RANGE
OF APPLICATIONS**



CF2KS001

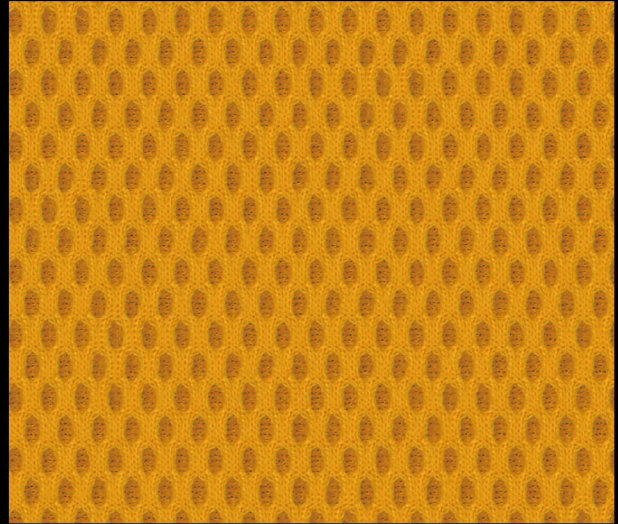


Composition: 66% Recycled Polyester +
34% Polyester

Width: 42" (±1")

Weight: 465 g/m² (±5%)

CF2KS002

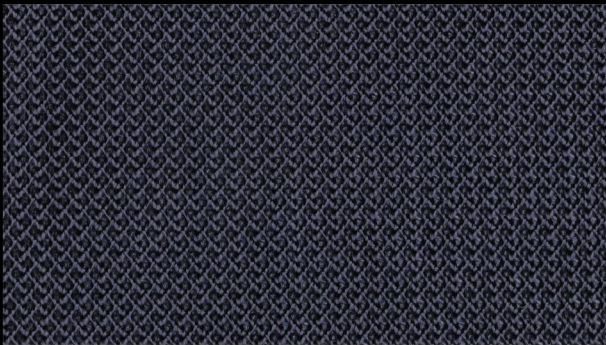


Composition: 52% Recycled Polyester +
48% Polyester

Width: 42" (±1")

Weight: 350 g/m² (±5%)

CFDJS011

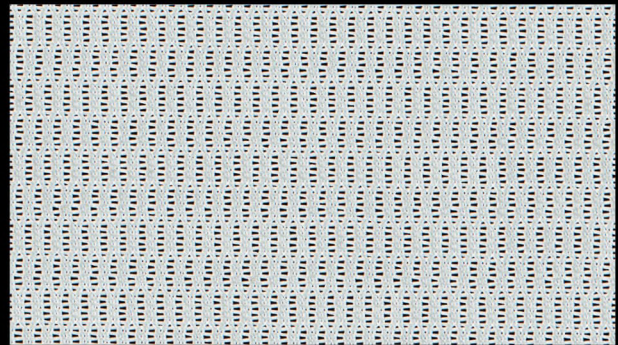


Composition: 100% Recycled Polyester

Width: 56" (±1")

Weight: 199 g/m² (±5%)

CFDKS006



Composition: 100% Recycled Polyester

Width: 48" (±1")

Weight: 245 g/m² (±5%)

CFDJS013

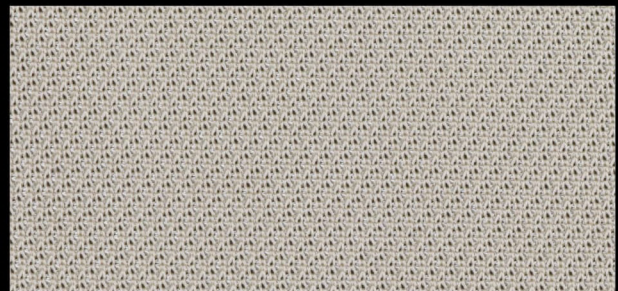


Composition: 100% Recycled Polyester

Width: 60" (±1")

Weight: 280 g/m² (±5%)

CFDNT003

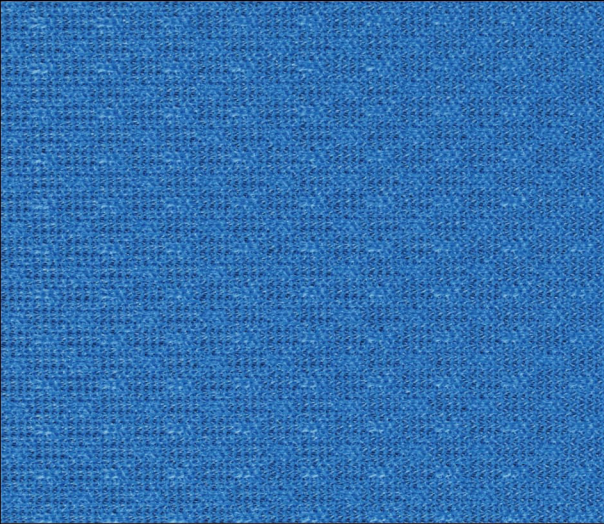


Composition: 100% Recycled Polyester

Width: 52" (±1")

Weight: 185 g/m² (±5%)

CFDNT001

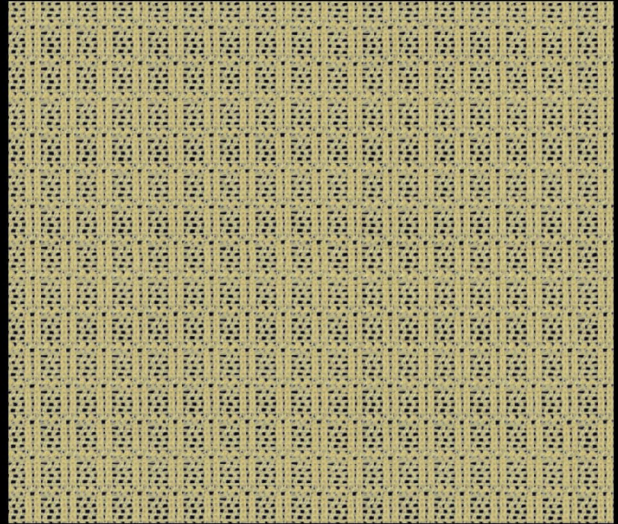


Composition: 100% Recycled Polyester

Width: 48" (±1")

Weight: 194 g/m² (±5%)

CFDNT004

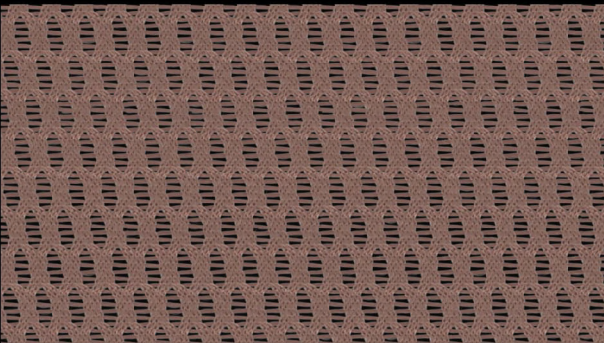


Composition: 100% Recycled Polyester

Width: 50" (±1")

Weight: 186 g/m² (±5%)

CFDNT002

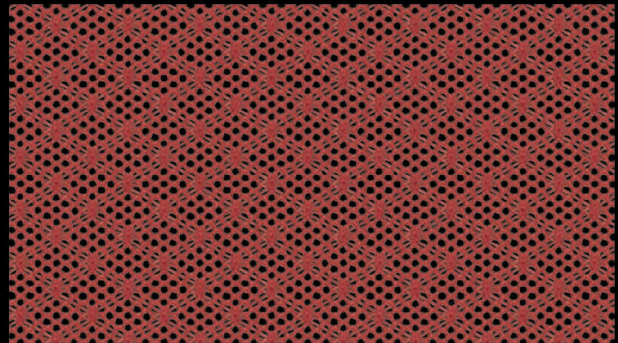


Composition: 100% Recycled Polyester

Width: 48" (±1")

Weight: 239 g/m² (±5%)

CFDNT005



Composition: 100% Recycled Polyester

Width: 52" (±1")

Weight: 183 g/m² (±5%)

CFDKS005

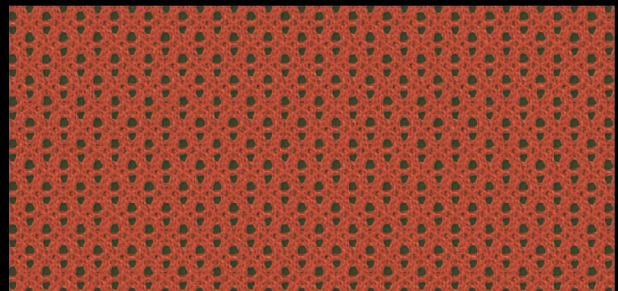


Composition: 87% Recycled Polyester +
13% CD Polyester

Width: 58" (±1")

Weight: 322 g/m² (±5%)

CFDKS007

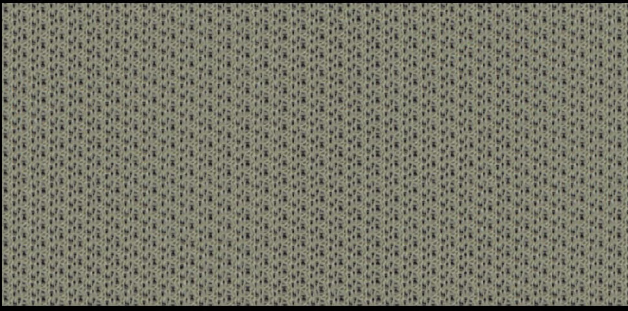


Composition: 100% Recycled Polyester

Width: 46" (±1")

Weight: 305 g/m² (±5%)

CF8NT003

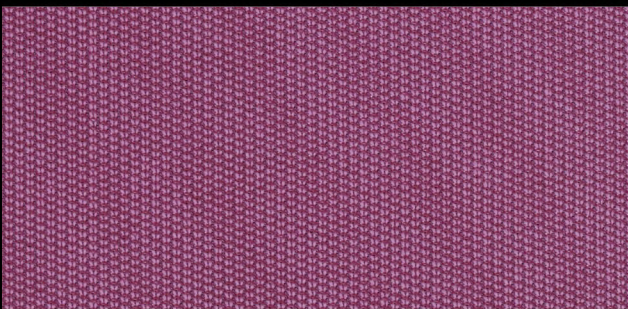


Composition: 100% Recycled Polyester

Width: 40" (±1")

Weight: 261 g/m² (±5%)

CF8NT001

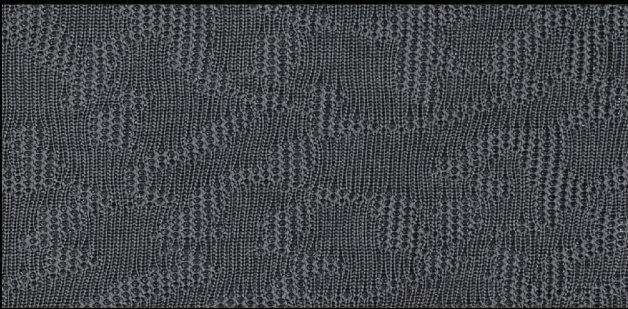


Composition: 100% Recycled Polyester

Width: 40" (±1")

Weight: 323 g/m² (±5%)

CF8NT009

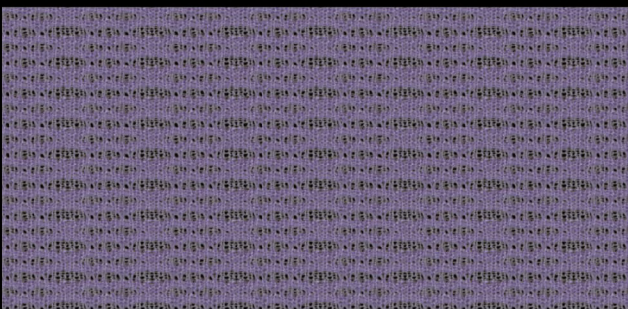


Composition: 100% Recycled Polyester

Width: 40" (±1")

Weight: 305 g/m² (±5%)

CF8NT017

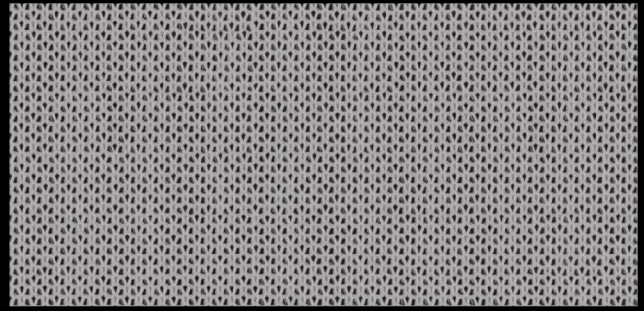


Composition: 100% Recycled Polyester

Width: 42" (±1")

Weight: 294 g/m² (±5%)

CF8MT024

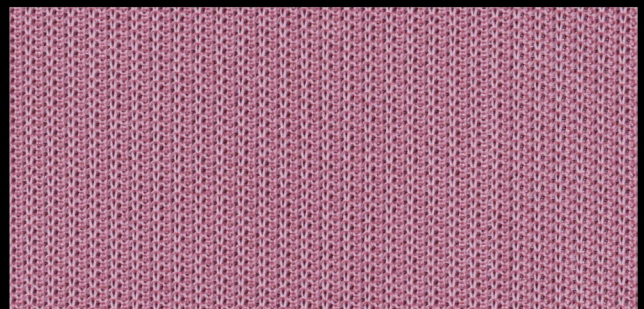


Composition: 100% Recycled Polyester

Width: 38" (±1")

Weight: 350 g/m² (±5%)

CF8NT005

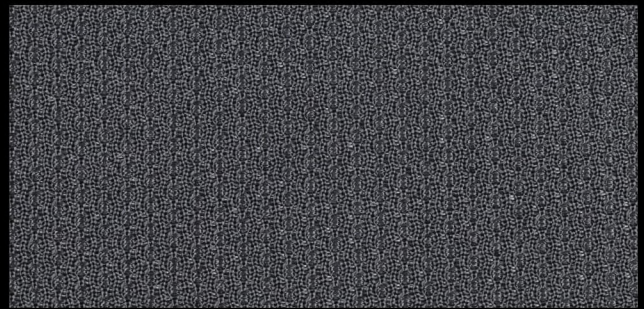


Composition: 100% Recycled Polyester

Width: 40" (±1")

Weight: 267 g/m² (±5%)

CF8NT019

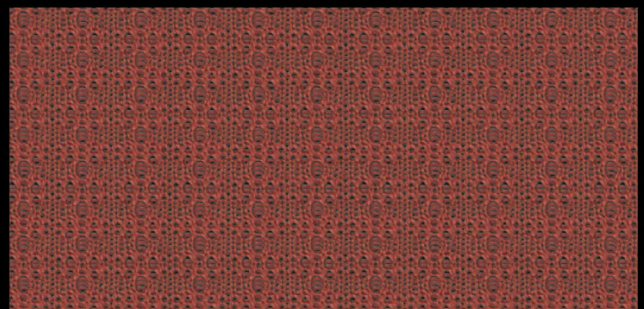


Composition: 100% Recycled Polyester

Width: 44" (±1")

Weight: 316 g/m² (±5%)

CF8NT006

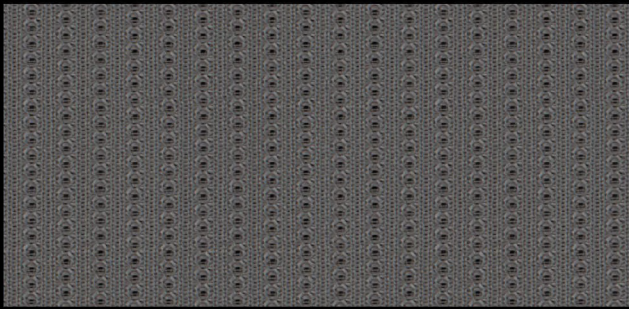


Composition: 100% Recycled Polyester

Width: 40" (±1")

Weight: 323 g/m² (±5%)

CF8NT011

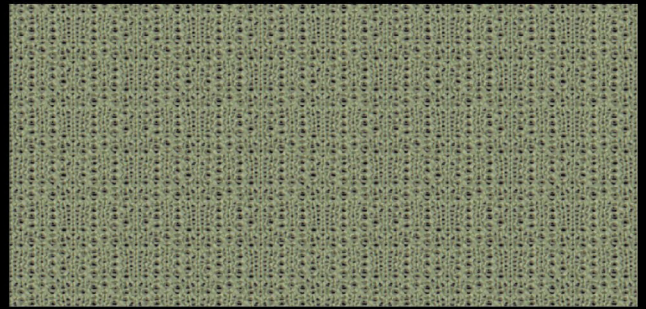


Composition: 100% Recycled Polyester

Width: 39" (±1")

Weight: 352 g/m² (±5%)

CF8NT015

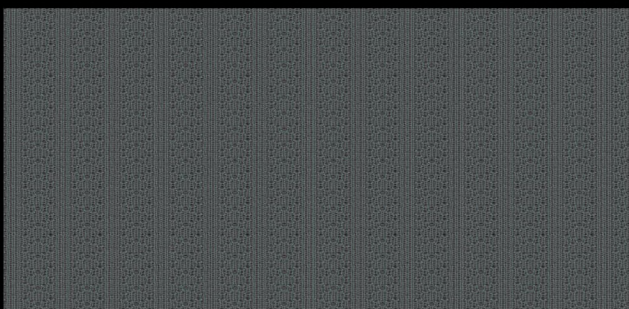


Composition: 100% Recycled Polyester

Width: 38" (±1")

Weight: 361 g/m² (±5%)

CF8NT010



Composition: 100% Recycled Polyester

Width: 39" (±1")

Weight: 364 g/m² (±5%)

CF8NT008

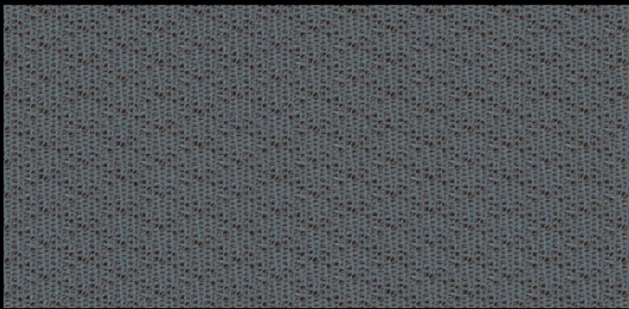


Composition: 100% Recycled Polyester

Width: 40" (±1")

Weight: 305 g/m² (±5%)

CF8NT022

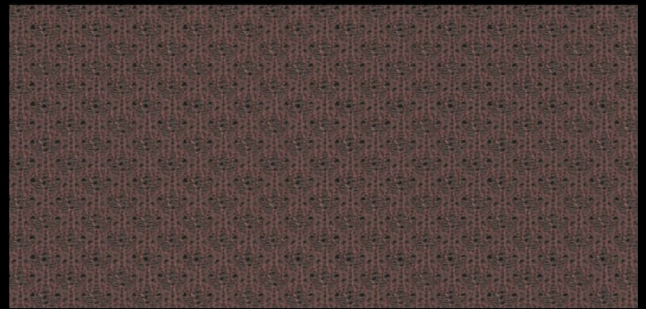


Composition: 100% Recycled Polyester

Width: 40" (±1")

Weight: 357 g/m² (±5%)

CF8NT021

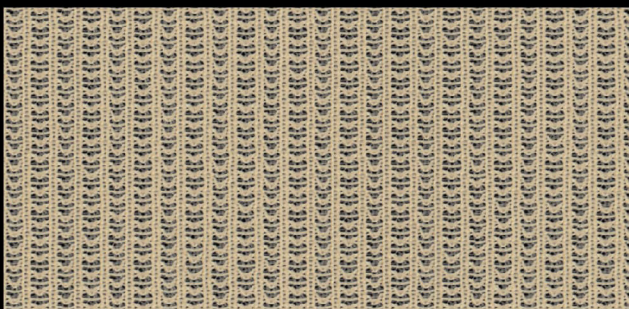


Composition: 100% Recycled Polyester

Width: 38" (±1")

Weight: 409 g/m² (±5%)

CF8NT018

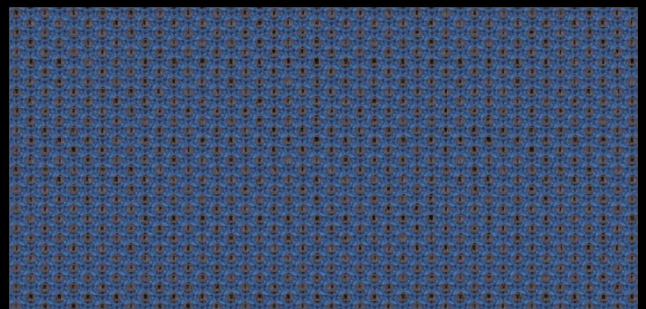


Composition: 100% Recycled Polyester

Width: 42" (±1")

Weight: 416 g/m² (±5%)

CF8NT007



Composition: 100% Recycled Polyester

Width: 40" (±1")

Weight: 446 g/m² (±5%)



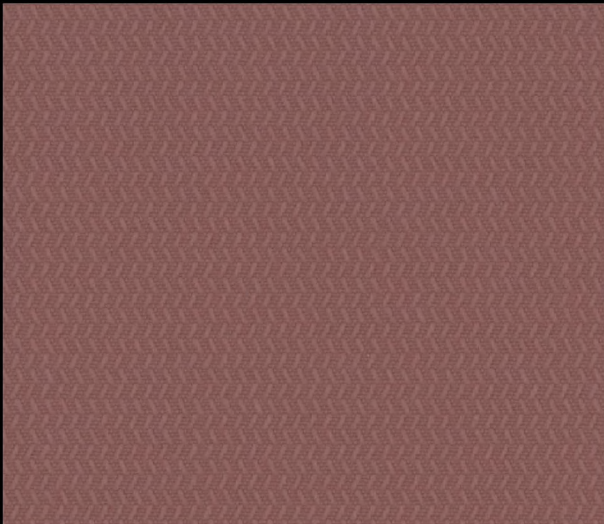
CORDURA[®]
re/cor[™]

RPET

Transform
waste to want.



CFJNT008

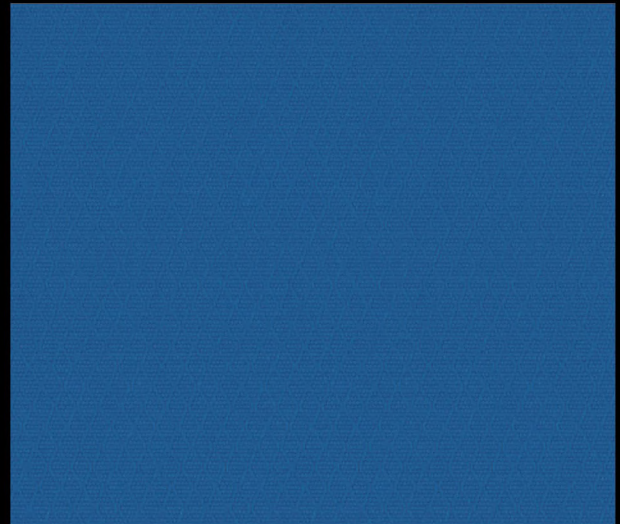


Composition: 100% Recycled Polyester

Width: 58" (±1")

Weight: 264 g/m² (±5%)

CFJNT009

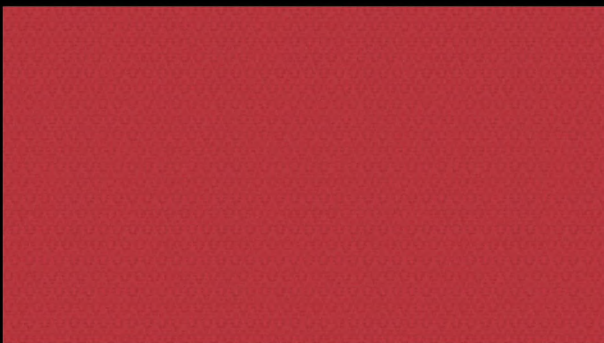


Composition: 100% Recycled Polyester

Width: 58" (±1")

Weight: 253 g/m² (±5%)

CFJNT005

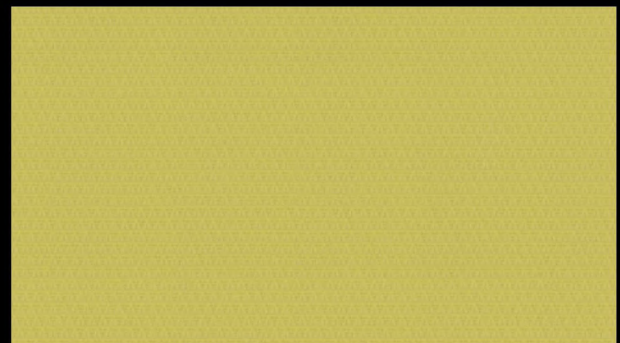


Composition: 100% Recycled Polyester

Width: 58" (±1")

Weight: 253 g/m² (±5%)

CFJNT006



Composition: 100% Recycled Polyester

Width: 58" (±1")

Weight: 257 g/m² (±5%)

CFJIS001

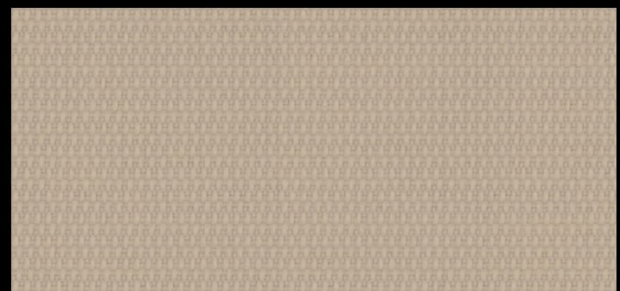


Composition: 100% Recycled Polyester

Width: 58" (±1")

Weight: 225 g/m² (±5%)

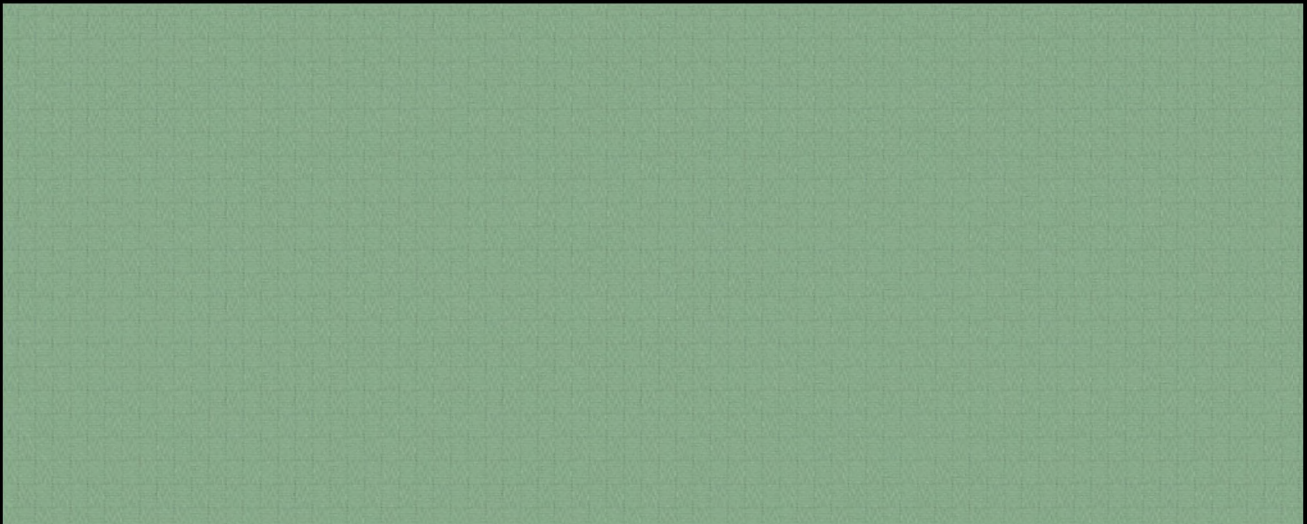
CFJNT007



Composition: 100% Recycled Polyester

Width: 58" (±1")

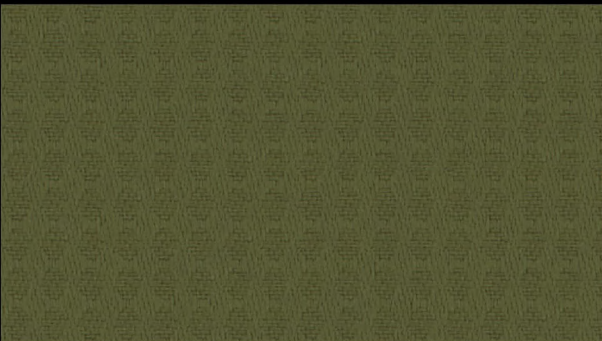
Weight: 267 g/m² (±5%)

CFJIS010

Composition: 100% Recycled Polyester

Width: 58" (±1")

Weight: 242 g/m² (±5%)

CFJIS015

Composition: 100% Recycled Polyester

Width: 58" (±1")

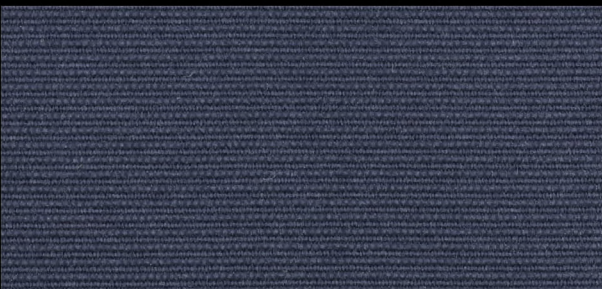
Weight: 256 g/m² (±5%)

CFJIS016

Composition: 100% Recycled Polyester

Width: 58" (±1")

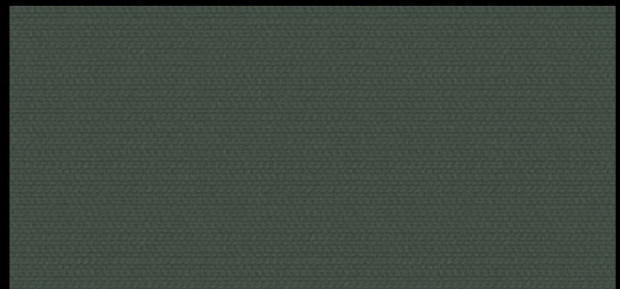
Weight: 265 g/m² (±5%)

CFJNT003

Composition: 100% Recycled Polyester

Width: 58" (±1")

Weight: 264 g/m² (±5%)

CFJNT004

Composition: 100% Recycled Polyester

Width: 58" (±1")

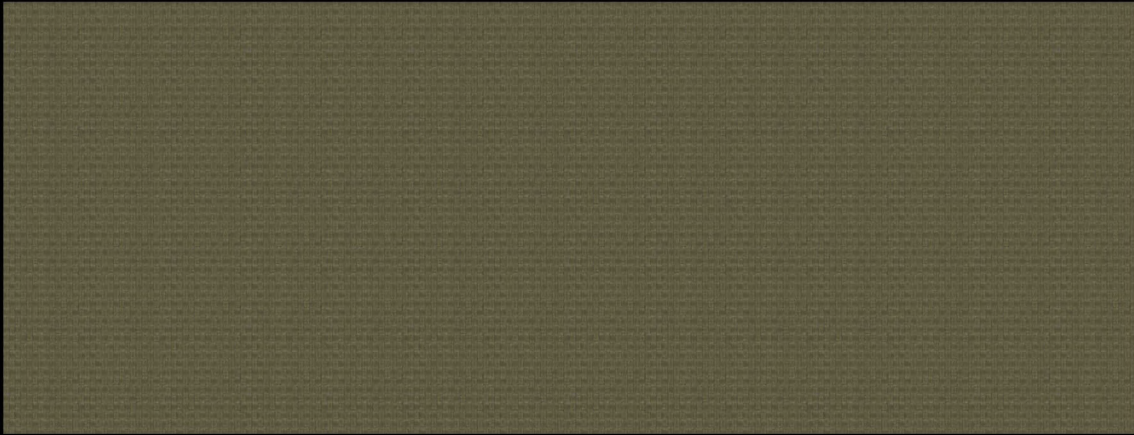
Weight: 252 g/m² (±5%)

CORDURA®
HP Fabric

**BEST IN-CLASS
PERFORMANCE
DESIGNED FOR
OPTIMUM PRINT**



CFJNT001



Composition: 100% Recycled Polyester

Width: 58" (±1")

Weight: 323 g/m² (±5%)

CFJNT016



Composition: 100% Recycled Polyester

Width: 58" (±1")

Weight: 444 g/m² (±5%)

CFJNT010

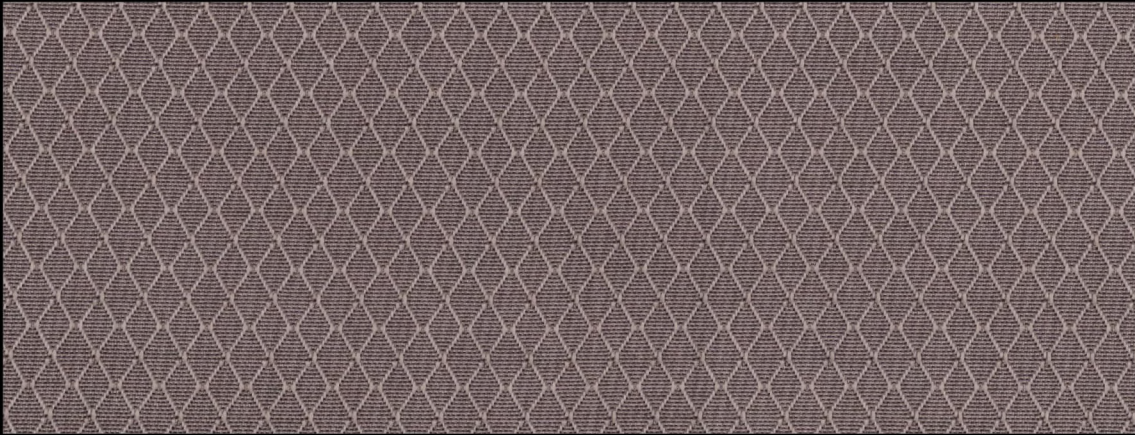


Composition: 100% Recycled Polyester

Width: 58" (±1")

Weight: 275 g/m² (±5%)

CFJHS002

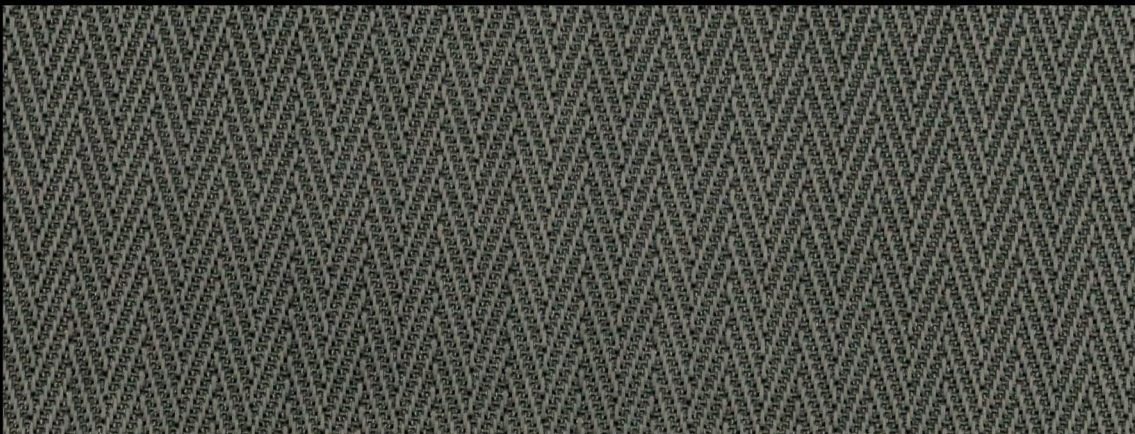


Composition: 100% Polyester

Width: 58" (±1")

Weight: 294 g/m² (±5%)

CFJHS004



Composition: 100% Polyester

Width: 58" (±1")

Weight: 279 g/m² (±5%)

CFJNT002



Composition: 100% Recycled Polyester

Width: 58" (±1")

Weight: 232 g/m² (±5%)

HANGTAGS

The CORDURA® brand offers Hangtags and Sew-in Labels as marketing tools. Below lists the item codes, sizes and application circumstances.



LEGACY OVAL SHAPED HANGTAG

Code: IN-21A
Size: (W) 11.4cm x (H) 5.2cm

Regional languages:
-NA: EN, ES
-EU: EN, ES, FR, DE
-AP: EN, Simplified ZH, JA, KO

Applicable CORDURA® fabric:
CORDURA® AFT
CORDURA® HP
CORDURA® re/cor™



DESIGN CENTRIC HANGTAG

Code: IN-21B
Size: (W) 12.7cm x (H) 3.2cm

Regional languages:
-NA: EN, ES
-EU: EN, ES, FR, DE
-AP: EN, Simplified ZH, JA, KO

Applicable CORDURA® fabric:
CORDURA® AFT
CORDURA® HP
CORDURA® re/cor™



CORDURA® RE/COR™ HANGTAG

Code: IN-21C
Size: (W) 12.7cm x (H) 4.1cm

Regional languages:
-NA: EN, ES
-EU: EN, ES, FR, DE
-AP: EN, Simplified ZH, JA, KO

Applicable CORDURA® fabric:
CORDURA® re/cor™





SEW-IN LABELS

CORDURA® *Advanced Fabrics* Sew-In-Label



IN-21W-AF-BLK-25MM

Size: (L) 19mm x (W) 25mm (Folded)
Sew-in line: On Bottom

Applicable product:
Footwear, Small accessory



IN-21W-AF-BLK-25MM-TOP

Size: (L) 19mm x (W) 25mm (Folded)
Sew-in line: On Top

Applicable product:
Footwear, Small accessory

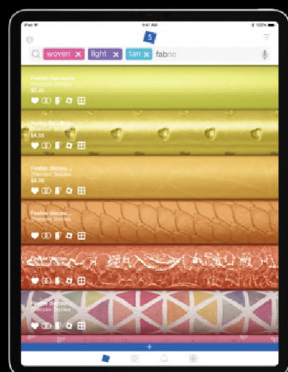
TLC support customer with Hangtag/Sew-In Label application.

Application needs:

1. Product image, and model name or numbers.
2. Order quantity of HT/SIL and CORDURA® fabric.

*Please be sure CORDURA® fabric covers where textile is used on the product.

Download the app to view 3D and more.



Mobile access



iOS

Web access



www.swatchbook.us
www.swatchbook.cn

Want to see more fabrics? Please log-in this account.

User ID: TLC.Fabric.A@gmail.com

Password: T.F.a@0113





www.tiongliong.com