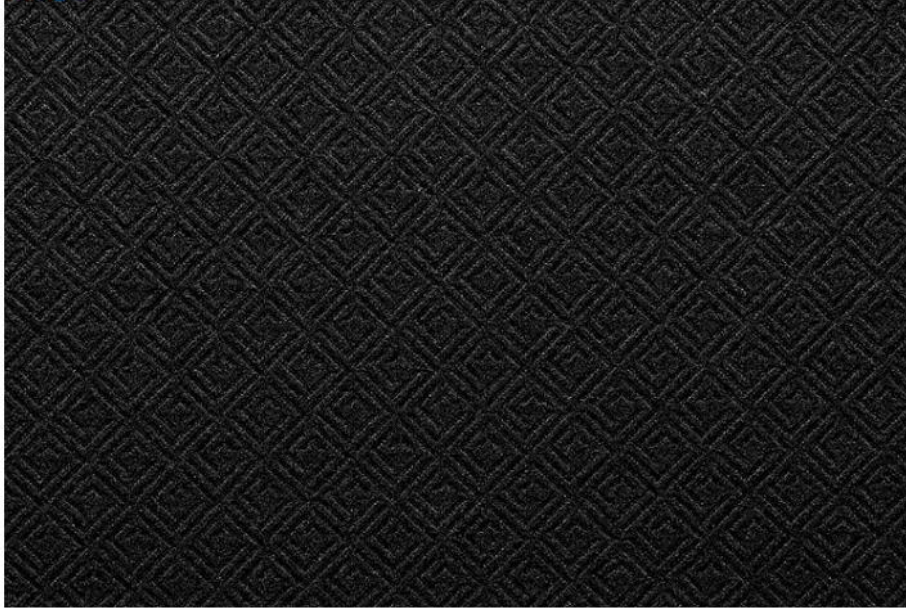
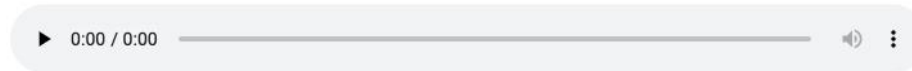


Italy's Sitip shows embossed sustainable designs at Performance Days

02
May '22



Pic: Sitip



At Performance Days, the leading trade fair on the latest trends in the development of fabrics for the functional textile industry, Sitip presented its latest innovations with an absolute focus on the embossing technique, a particular system of mechanical processes that now can also be used on the recycled items from the Native Sustainable Textiles line.

The collection of embossed designs combines performance, style and sustainability: thanks to special mechanical processes that combine heat and pressure, the fabric is embossed with geometric and design motifs for a more structured and palpable texture perfect for fashion and athleisure. The Native line is a technology that is applied to fabrics produced with recycled yarns and chemicals with low environmental impact, implementing the Global Recycle Standard (GRS), result of the journey towards sustainability implemented by the company, the company said in a press release.

Performance Days, this year had its Performance Forum titled "The Journey to Carbon Neutrality - CO2 Reducing Technologies and Measuring Tools". Protagonists were therefore all those materials that contain carbon in reduced form and the strategies/technologies that companies implement to ensure the reduction of CO2 emissions during production and how these reductions are actually measured (through energy saving, careful use of resources, use of more sustainable materials, local production and other technological and production measures).

Sitip's fabrics selected by the forum were Native-Cosmopolitan Oslo, Native-Cosmopolitan Belfast and Native-Cosmopolitan Paris GZ Design Carreaux/Seersucker Gale. Native-Cosmopolitan Oslo is a fine gauge circular fabric made with post-consumer recycled yarns, 4-way stretch, gives UV protection (UPF 50+), skin comfort, no-see-through effect and perfect fit. Native-Cosmopolitan Belfast is a fine gauge 4-way stretch and double-knit fabric made with post-consumer recycled yarns, no-see-through effect and soft hand. Native-Cosmopolitan Paris GZ Design Carreaux/Seersucker Gale is a back brushed fabric in fine gauge made with post-consumer recycled yarns and chemicals with a low environmental impact, 4-way stretch, no-see-through, comfortable on the skin and easy care. Carreaux/Seersucker Gale are three different types of embossing technique with a particular system of mechanical processes that combine heat and pressure, the fabric is embossed with geometric and design motifs for a more structured and palpable texture.